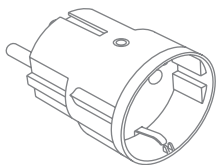


## Smart Plug Mini

Product reference SPLZB-13X



## INSTALLATION MANUAL

Version 2.4



### Product description

Develco Products' Smart Plug Mini is an intelligent remotely controlled adapter.

The Smart Plug Mini monitors the power consumption and allows the user to instantly turn on and off any device from across the world - or from the living room.

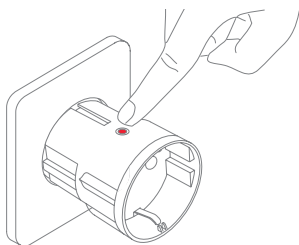
The Smart Plug Mini is available in various versions.

### Getting started

- Connect the Smart Plug Mini to the power outlet.
- The Smart Plug Mini will start searching (up to 15 minutes) for a ZigBee network to join.
- Make sure that the ZigBee network is open for joining devices and will accept this Smart Plug Mini.
- While searching for the network, the red LED is flashing every second.



- If the scanning has timed out, a short press on the LED button will restart it.



- The Smart Plug Mini's output is active when the green LED is on.



**NOTE:** Do not remove the product label as it contains important information.

### Precautions

#### PLACE THE SMART PLUG

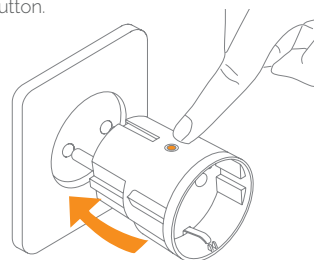
- Indoors at a temperature between 0-40°C.
- Avoid switching maximum loads frequently on or off, in order to sustain a long life for the smart plug.
- In case of power failure, the device will restore itself to the on/off status it had before the power failure.
- If the device is used as signal amplifier, please position the device in between the central device and the sensor(s).

### Resetting

Resetting is needed if you want to connect your Smart Plug Mini to another gateway, if you need to perform a factory reset to remove abnormal behavior, or if you need to reset accumulative registers and logs.

#### STEPS FOR RESETTING

1. Connect the Smart Plug Mini to the power outlet.
2. Press and hold down the button on the device.
3. Hold the button down until the red LED flashes continuously, then release the button.



4. After releasing the button, the red LED will stay on for 2-5 seconds. During that time, the device must not be switched off or unplugged.

### Modes

#### NORMAL MODE

- Green LED means that the smart plug output is active (relay is on). The relay can be switched on and off by pushing the button.

#### SEARCHING GATEWAY

- A red LED is flashing every second

### Fault finding

- In case of a bad or weak signal, change the location of the Smart Plug Mini or your gateway.

**WARNING:** Be careful that no liquid gets into the smart plug since it may damage the equipment.

### Other information

- The Smart Plug Mini is rated for 10 A continuous load, and 16 A (-3500 W) short time load.
- It will automatically switch off if the load exceeds 16 A or the internal temperature gets too high.
- Dispose the product properly at the end of life. This is electronic waste which should be recycled.

### CE certification

The CE mark affixed to this product confirms its compliance with the European Directives which apply to the product and, in particular, its compliance with the harmonized standards and specifications.



### IN ACCORDANCE WITH THE DIRECTIVES

- Radio & Telecommunications Terminal Equipment Directive 1999/5/EC
- Low Voltage Directive 2006/95/EC
- EMC Directive 2004/108/EC
- RoHS Directive 2011/65/EU

### Other certifications

- ZigBee Home Automation certified



### All rights reserved.

Develco Products assumes no responsibility for any errors, which may appear in this manual. Furthermore, Develco Products reserves the right to alter the hardware, software, and/or specifications detailed herein at any time without notice, and Develco Products does not make any commitment to update the information contained herein. All the trademarks listed herein are owned by their respective owners.

Distributed by Develco Products A/S  
Olof Palmes Allé 40  
8200 Aarhus  
Denmark



T0000039