

Electricity Meter Interface 2, LED

Real-time measurement and reporting of power consumption

The Electricity Meter Interface 2, LED serves as a Zigbee interface for your customers' electronic meters. The Electricity Meter Interface 2, LED will collect readings and information from other meters, and send data via the Zigbee communication to appliances in the building. Your customer will then be able to follow their energy consumption through a display, their computer or mobile phone.

Key features are:

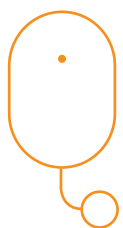
- LED sensor
- Zigbee 3.0 certified

Cooperation with any other meters

The Electricity Meter Interface 2, LED can be used with most electronic power meters. It is compatible with all meters with an LED indicating power consumption.

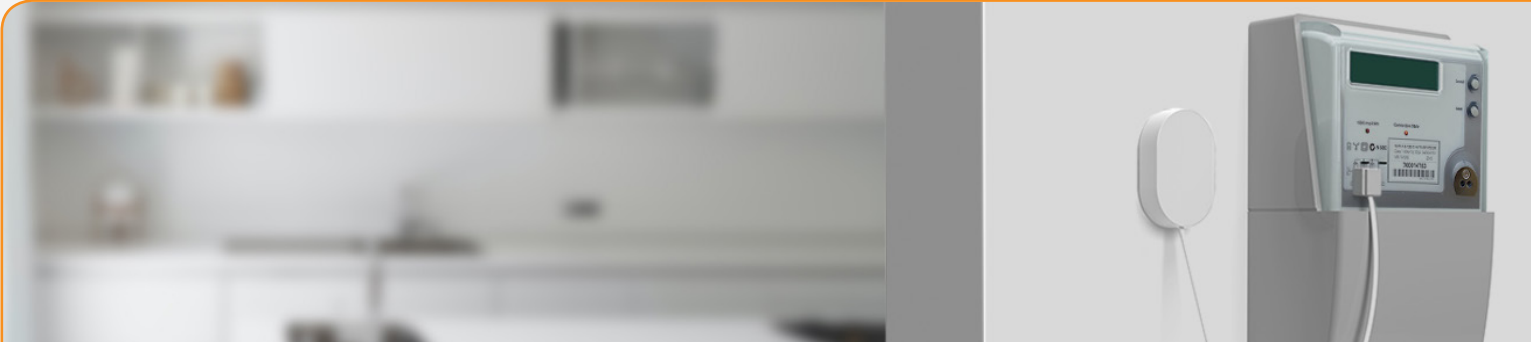
The Electricity Meter Interface 2, LED cannot be used in installations with power production such as PV systems or similar.

All data can be collected by an external gateway and stored in a normal data flash. The Zigbee profile ensures high security in order to protect data and prevent hacking.



- **No installation cost**
- **Secure communication**
- **Applicable with various meters**

The Electricity Meter Interface 2, LED comes with an optical probe, which is easily by magnet. The cable length is approximately 800 mm.



Electricity Meter Interface 2, LED - Technical specifications

Model number: EMIZB-141

General

Dimensions (W x H x D)	Sensor: 95 x 65 x 22,3 mm Probe: 25,4 x 28,4 x 11,6 mm
Color	White
Power supply	Battery: 2 x AA alkaline batteries, exchangeable Battery life: 2 years, updating every 5 seconds, at room temperature Battery level and low battery warning can be reported
RF performance	Sensitivity -100 dBm Output power 10 dBm (EU), 19 dBm (US)
Environment	Operation temperature -20 to +60°C IP class: IP22 Relative humidity 5% - 85%, non condensing
Functions	
Meter reading	Via a probe that reads LED
Interfaces	Supports LED pulses (configurable pulse range from 50 to 10 000 pulses per kWh)
Communication	
Wireless protocol	Zigbee 3.0, Zigbee end-device
Certifications	Conforming to CE, FCC, IC, ISED, RED and RoHS directives Zigbee 3.0 certified