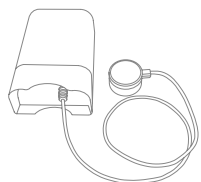
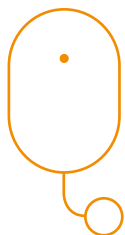


External Meter Interface



INSTALLATION MANUAL

Version 1.5



Product description

The External Meter Interface collects readings and information from your existing and already installed meters and sends the data to a Zigbee based gateway and on to connected appliances.

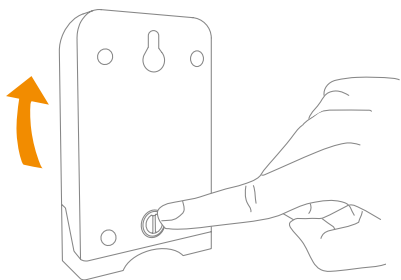
This product enables you to follow your energy consumption through a display, your computer or your mobile phone.

Precautions

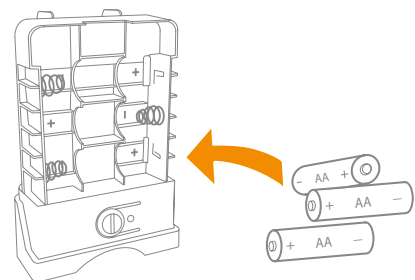
- Do not remove the product label as it contains important information.
- We recommend to take a picture of the electricity meter before installation so you can save the number of imp/kWh. Occasionally the number is close to the LED and by attaching the hook-and-loop you may cover the number and it is convenient to check it if forgotten.

Getting started

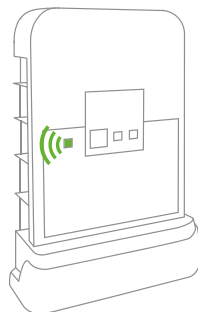
- Open the casing of the device by pressing the button on the back of the monitor casing and pulling the casing upwards.



- Place enclosed AA-batteries into the device respecting the polarities.



- The EMI will now start searching (up to 15 minutes) for a Zigbee network to join.
- Make sure that the Zigbee network is open for joining devices and will accept the EMI.

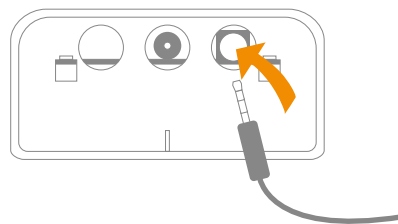


- While the EMI is searching for a Zigbee network to join, the LED flashes green.
- When the LED stops flashing, the EMI has successfully joined the Zigbee network.

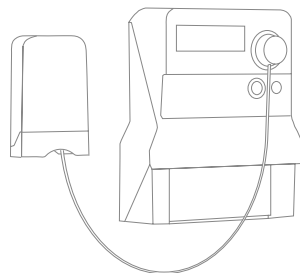
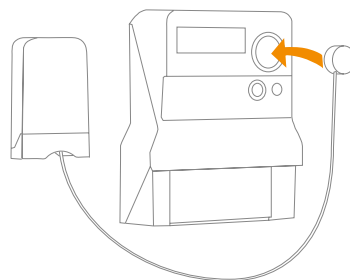
Installation steps

The External Meter Interface is equipped with an optical probe which is easily attached.

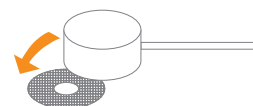
- First insert the end of the probe into the indicated socket on the External Meter Interface. Press firmly to ensure it is fully inserted.



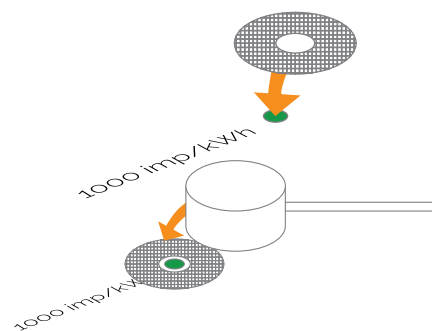
- How the probe is connected depends upon the meter. To use the infrared probe, look for a round port with a small window in the middle. The probe may be attached to this via the magnetic connection or attached velcro.



- If the port is not magnetic or if you are using the LED probe, you will have to use the attached velcro doughnut.



- Peel off the velcro doughnut from the probe, remove the tape back, and place the circle directly over the flashing LED labelled "imp/kWh". Be as precise as possible when placing the inner circle over the flashing LED to ensure best metering.



Placement

Place the interface indoors at a temperature between 0-50°C, close to the electricity meter.

Resetting

Resetting is needed if you want to reconnect your External Meter Interface or if you need to perform a factory reset to remove abnormal behaviour.

STEPS FOR RESETTING

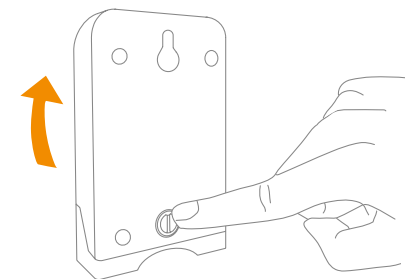
- Open the casing of the device.
- Press and hold the menu button until the LED flashes continuously then release the button again.
- After a successful reset the green LED will start flashing which indicates network search.

Battery replacement

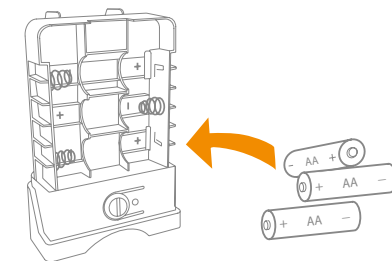
CAUTION: RISK OF EXPLOSION IF BATTERIES ARE REPLACED BY AN INCORRECT TYPE. DISPOSE OF THE BATTERIES IN ACCORDANCE WITH INSTRUCTIONS.

CAUTION: When removing cover for battery change - Electrostatic Discharge (ESD) can harm electronic components inside

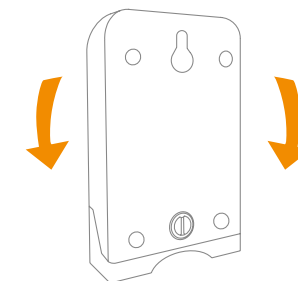
- To remove the batteries, open the casing of the interface.



- After removing the used batteries, insert new AA-batteries respecting the polarities.



- Close the casing, and re-attach the interface to the meter.



Fault finding

- If the External Meter Interface does not send correct meter data, validate that the probe is mounted correctly to the meter.
- In case of a weak or a bad signal, change the location of the External Meter Interface or strengthen the signal with a smart plug.

Disposal

Dispose the product and battery properly at the end of life. This is electronic waste which should be recycled.

CE certification

The CE mark affixed to this product confirms its compliance with the European Directives which apply to the product and, in particular, its compliance with the harmonized standards and specifications.



IN ACCORDANCE WITH THE DIRECTIVES

- Radio & Telecommunications Terminal Equipment Directive 2014/53/EU
- EMC Directive 2014/30/EU
- RoHS Directive 2011/65/EU

Other certifications

- Zigbee Home Automation 1.2 compliant



All rights reserved.

Develco Products assumes no responsibility for any errors, which may appear in this manual. Furthermore, Develco Products reserves the right to alter the hardware, software, and/or specifications detailed herein at any time without notice, and Develco Products does not make any commitment to update. All the information contained herein. All the trademarks listed herein are owned by their respective owners.

Copyright © Develco Products A/S

Distributed by Develco Products A/S
Tangen 6
8200 Aarhus N
Denmark